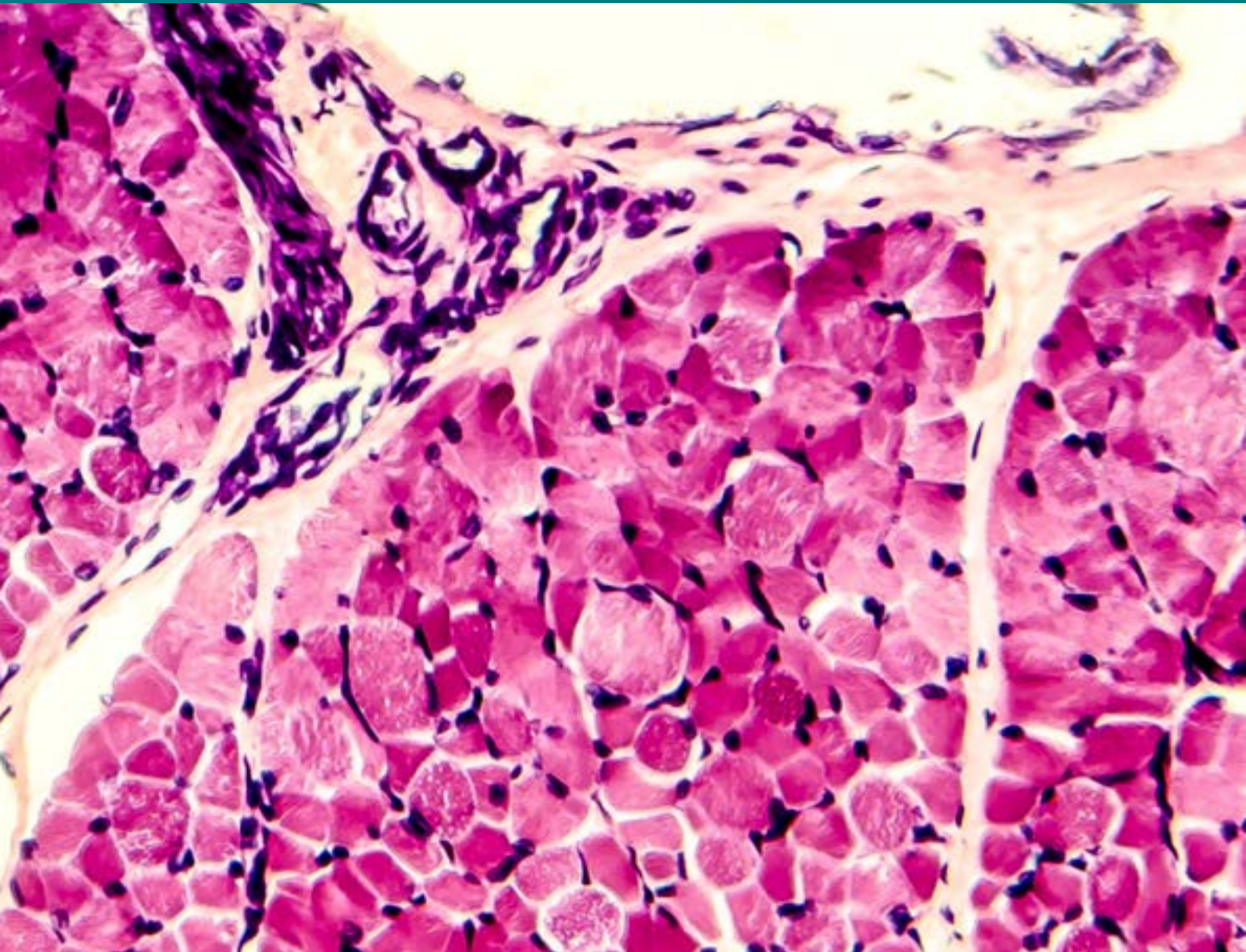


Physiological Mini Reviews

15
Volume



Vol. 15, September-October, 2022
ISSN 1669-5410 (Online)
pmr.safsiol.org.ar

Physiological
Mini
Reviews



Physiological Mini Reviews is the official journal of the Asociación Latinoamericana de Ciencias Fisiológicas, (ALACF), which is constituted by the following Societies:

Sociedad Argentina de Fisiología (SAFIS)

Sociedad Brasileira de Fisiología (SBFis)

Asociación Colombiana de Fisiología (COLFISIS)

Sociedad Cubana de Ciencias Fisiológicas (SOCCF)

Sociedad Chilena de Ciencias Fisiológicas (SCHCF)

Sociedad de Fisiología de Haití (SHF)

Sociedad Mexicana de Ciencias Fisiológicas (SMCF)

Sociedad Peruana de Ciencias Fisiológicas (SCPCF)

Sección de Fisiología de la Sociedad Uruguaya de Biociencias (SUB)

SPONSORS

We are very grateful to our sponsors

DEPARTAMENTO DE POSTGRADO
FACULTAD DE CIENCIAS MÉDICAS UNLP



maestría

EN INVESTIGACIÓN BIOMÉDICA

Acreditada y Categorizada CONEAU "C" Res. FC 2018-42
Resolución Ministerial de Reconocimiento oficial y
validez nacional del título: Res.1596/16

INSCRIPCIONES
ABIERTAS

INFORMES: maestriaibunlp@gmail.com

FACULTAD DE CIENCIAS MÉDICAS



UNIVERSIDAD NACIONAL DE LA PLATA



C I C
CONICET



www.institutomedicoplatense.com.ar

Laboratorio de Electrofisiología y Medicina del Sueño.
Instituto Médico Platense. La Plata, Argentina
lenf.imp@gmail.com



intemun^{s.a}

DIVISION INSUMOS

Ventas de Insumos Médicos Hospitalarios
La Plata - Buenos Aires - Argentina
Tel: 0221 471 8951 011-75120306 0221-586 9111
ventas@intemun.com.ar administracion@intemun.com.ar

Distribuidor oficial *Baño Fácil*



www.inbiohw.com.ar

Physiological Mini-Reviews

[ISSN 1669-5410 (Online)]

Edited by the **Argentinean Physiological Society and the Latin American Association of Physiological Sciences**

Journal address: Centro de Investigaciones Cardiovasculares y Cátedra de Fisiología y Física Biológica.

Facultad de Ciencias Médicas; Universidad Nacional de La Plata;

La Plata, Buenos Aires, Argentina. Tel.-Fax: +54-211-4834833

<http://pmr.safisiol.org.ar>

Physiological Mini-Reviews is a scientific journal, publishing brief reviews on "hot" topics in Physiology. The scope is quite broad, going from "Molecular Physiology" to "Integrated Physiological Systems". As indicated by our title it is not our intention to publish exhaustive and complete reviews. We ask to the authors concise and updated descriptions of the "state of the art" in a specific topic. Innovative and thought-provoking ideas are welcome.

Founding Editor: Mario Parisi, Buenos Aires, Argentina

Editor in Chief: Alicia Mattiazzi, La Plata, Argentina

Associate Editors

Alejandro Aiello, La Plata, Bs. As., Argentina

Walter Boron, Cleveland, OH, United States

Maria Jose Campagnole-Santos, Belo Horizonte, MG, Brazil

Julio Copello, Springfield, IL, United States

Ana Franchi, Ciudad Autónoma de Buenos Aires, Argentina

Cecilia Hidalgo, Santiago, Chile

Daniel Ortuño-Sahagun, Guadalajara, Jal, México

Eduardo Rios, Chicago, IL, United States

Luis Sobrevia, Santiago, Chile

Administrative Council

Presidents or delegates of Latin American Physiological Societies or Biological Societies

Ma. del Carmen Cortés Sánchez, Puebla, Pue, México

Paola Contreras, Montevideo, Uruguay

Jean-Claude Dorsainvil, Puerto Príncipe, Haití

Mayppee González Jardinez, La Habana, Cuba

Henry León, Chía, Cund., Colombia

Azael Paz Aliaga, Lima, Perú

Zully Pedroso, Santiago, Chile

Patricia Rocco, Río de Janeiro, RJ, Brazil

Martín Vila-Petroff, La Plata, Argentina

Editorial Board:

Vagner Roberto Antunes, Sao Paulo, Brazil

Cristina Arranz, Ciudad Autónoma de Buenos Aires, Argentina

Claudia Capurro, Ciudad Autónoma de Buenos Aires, Argentina

Daniel Cardinali, Ciudad Autónoma de Buenos Aires, Argentina

Marcelino Cerejido, México City, México

Alberto Crottogini, Ciudad Autónoma de Buenos Aires, Argentina

Oswaldo Delbono, Winston-Salem, NC, United States

Irene Ennis, La Plata, Bs. As., Argentina

Ariel Escobar, Merced, CA, United States

Ludmila Firaletova, St. Petersburg, Russia

Benjamín Florán Garduño, Ciudad de México, México

Ana María Gomez, Chatenay-Malabry, France

Guillermo González Burgos Pittsburg, PA, United States

Carlos González, Lubbock, TX, United States

Hilda Leonor González Olaya, Bucaramanga, SAN, Colombia

Sergio Gradilone, Rochester, MN, United States

Joost Hoenderop, Nijmegen, The Netherlands

Bredford Kerr Fuentes, Santiago, Chile.

Cecilia Larocca, Rosario, Santa Fe, Argentina

Elena Lascano, Ciudad Autónoma de Buenos Aires, Argentina

Reinaldo Marín, Caracas, Venezuela

Raúl Marinelli, Rosario, Santa Fé, Argentina

Susana Mosca, La Plata, Bs. As., Argentina

Cecilia Mundiña-Weilemann, La Plata, Bs. As., Argentina

Gustavo Pérez, La Plata, Bs. As., Argentina

Darío Protti, Sidney, NSW, Australia

Margarita Salas, La Plata, Bs. As., Argentina

Daniel Schulz, Gif sur Yvette, France

Gary Sieck, Rochester, MN, United States

Education Editorial Board

Robert G. Carroll, Greenville, NC, United States

Matilde Said, La Plata, Bs. As., Argentina

Roxana Troiano, Ciudad Autónoma de Buenos Aires, Argentina

Claudia Caldiz, La Plata, Bs. As., Argentina

Publishing Editorial Board

Carolina Caniffi, Ciudad Autónoma de Buenos Aires, Argentina

Verónica de Giusti, La Plata, Bs. As., Argentina

Luis Gonano, La Plata, Bs. As., Argentina

Alejandro Orłowsky, La Plata, Bs. As., Argentina

Zully Pedroso, Santiago, Chile

Matilde Said, La Plata, Bs. As., Argentina

Carlos Valverde, La Plata, Bs. As., Argentina

Alejandra Yeves, La Plata, Bs. As., Argentina

Editorial Assistant: María Ines Vera

Preparation and Submission of manuscripts:

"Physiological Mini-Reviews" will have a maximum of 3000 words, 50 references and 3 figures. Material will be addressed to scientific people in general but not restricted to specialist of the field. For citations in the text please refer to Instructions in our webpage. Final format will be given at the Editorial Office. Most contributions will be invited ones, but spontaneous presentations are welcome. Send your manuscript in Word format (.doc or .docx) to: pmr.alacf@gmail.com

Advertising: For details, rates and specifications contact the Associate Editor at the Journal address e-mail: pmr.alacf@gmail.com

The "Sociedad Argentina de Fisiología" is a registered non-profit organization in Argentina. (Resol. IGJ 763-04)

REGULATION OF VASCULAR REMODELING BY ANGIOTENSIN-(1-9)

Chiong M*, Ramírez A, Sanhueza-Olivares, F. Gonzalez, T, Martínez J, Norambuena-Soto I.

Advanced Center for Chronic Diseases, Facultad de Ciencias Químicas y Farmacéuticas, Universidad de Chile

* **Correspondence to:** mchiong@ciq.uchile.cl

ABSTRACT

The renin angiotensin system (RAS) is involved in the regulation of vascular remodeling induced by hypertension, vascular injury and inflammation. Angiotensin II (Ang II) is the most important peptide of the classical RAS pathway. Ang II exerts its biological action by binding to AT1 (AT1R) and AT2 (AT2R) receptors. The discovery of the homologous angiotensin I converting enzyme (ACE2), unmasked an intricated system of RAS regulation. In the counter-regulatory RAS pathway, Ang-(1-7) binds and activates Mas receptor (MasR), while Ang-(1-9) binds and activates AT2R. This review is focused in the inhibitory effects on vascular remodeling of ACE2, Ang-(1-9) and AT2R. Because of these vascular effects, the manipulation of the counter regulatory RAS emerges as a suitable therapeutical alternative to treat vascular diseases.

Keywords: ACE2, Ang-(1-9), AT2R, vascular remodeling, VSMC

RESUMEN

El sistema renina angiotensina (SRA) está involucrado en la regulación del remodelado vascular inducido por hipertensión, daño vascular e inflamación. La angiotensina II (Ang II) es el péptido más importante de la vía SRA clásica. Ang II ejerce su acción biológica al unirse a los receptores AT1 (RAT1) y AT2 (RAT2). El descubrimiento de la enzima convertidora de angiotensina I homóloga (ECA2), desenmascaró un intrincado sistema de regulación del SRA. En la vía SRA contrarreguladora, Ang-(1-7) se une y activa el receptor Mas (RMas), mientras que Ang-(1-9) se une y activa RAT2. Esta revisión se centra en los efectos inhibitorios sobre el remodelado vascular de ECA2, Ang-(1-9) y RAT2. Debido a estos efectos vasculares, la manipulación del SRA contrarregulador surge como una alternativa terapéutica adecuada para tratar enfermedades vasculares.

Palabras claves: ECA2, Ang-(1-9), RAT2. Remodelado vascular, CMLV

Introduction

Vascular smooth-muscle cells (VSMCs) are the main component of the artery's medial layer. These cells contract and thereby regulate blood vessel tone and consequently blood flow and pressure [1,2]. Pathological vascular remodeling is characterized by the narrowing of the vessel lumen, thickening of muscle intima layer, exacerbated extracellular matrix (ECM) production (fibrosis) and infiltration by immune cells [3,4]. In these diseases, changes in the VSMC phenotype have been extensively described [1]. In addition to increases on proliferation and migration rates, VSMC phenotypic switching also includes altered expression of contractile proteins, increased ECM component production, expression of pro-inflammatory cytokines and production of proteases [1]. Deregulation of neurohormonal mechanisms, including the renin–angiotensin system (RAS), which modulates endothelial and smooth muscle function and, ultimately, vessel wall structure, is involved in the genesis and progression of vascular diseases [2,3].

Renin angiotensin system (RAS)

RAS is a well-known regulator of blood pressure by controlling both salt and water homeostasis [4]. Moreover, the RAS is also involved in the vascular response to injury and inflammation [2,4]. Chronic activation of RAS leads to hypertension and triggers in vessels and other organs proinflammatory, prothrombotic, and atherogenic effects which are responsible for the hypertension-associated end-organ damage [4].

The classic RAS pathway (Figure 1) begins with angiotensinogen synthesized in the liver, which is cleaved by renin (EC 3.4.23.15), a protease released from the juxtaglomerular cells at the renal afferent arterioles after a decrease in Na^+ and/or Cl^- concentration in the glomerular ultrafiltrate at this level, or by adrenergic stimulation [3]. As result, a 10 amino acid peptide, angiotensin I (Ang I) is produced [5]. A zinc-dependent dicarboxypeptidase, the angiotensin converting enzyme I (ACE; EC 3.4.15.1), removes the last two amino acids from the carboxyl terminal of Ang I, generating the 8 amino acid peptide, Ang II. Ang II is also enzymatically generated from Ang I by chymase (EC 3.4.21.39) [5].

Ang II is the most important peptide of the classical pathway [4,5]. Ang II exerts its biological action by binding to G protein coupled receptors AT1 (AT1R) and AT2 (AT2R) [3,4]. The activation of AT1R by Ang II on VSMCs triggers vasoconstriction, on adrenal cortex stimulates aldosterone secretion, and on renal proximal tubules induces sodium reabsorption. AT1R activation also stimulates sympathetic neurotransmission [3,4]. In addition, signal transduction triggered by AT1R on VSMCs promotes NADPH and nuclear transcription factor- κB (NF- κB), eliciting oxidative stress, inflammation, and cell proliferation [2]. On the other hand, the activation of AT2R by Ang II generates opposite effects to those described for AT1R. AT2R activation induces vasodilation, normal endothelial function, natriuresis, anti-proliferative, anti-inflammatory and antifibrotic effects [6].

However, the physiological implications of this system have continued to expand over time [5]. In the classical RAS, new peptides have been described, including Ang III, Ang IV and Ang-(1-12) (Figure 1). Ang III is synthesized through the action of aminopeptidase A (EC 3.4.11.7) on Ang II. These 7 amino acids long peptide activates AT1R and AT2R and appears to be the main peptide involved in vasopressin and atrial natriuretic peptide release [7]. However, no direct action of Ang III on VSMCs has been yet described.

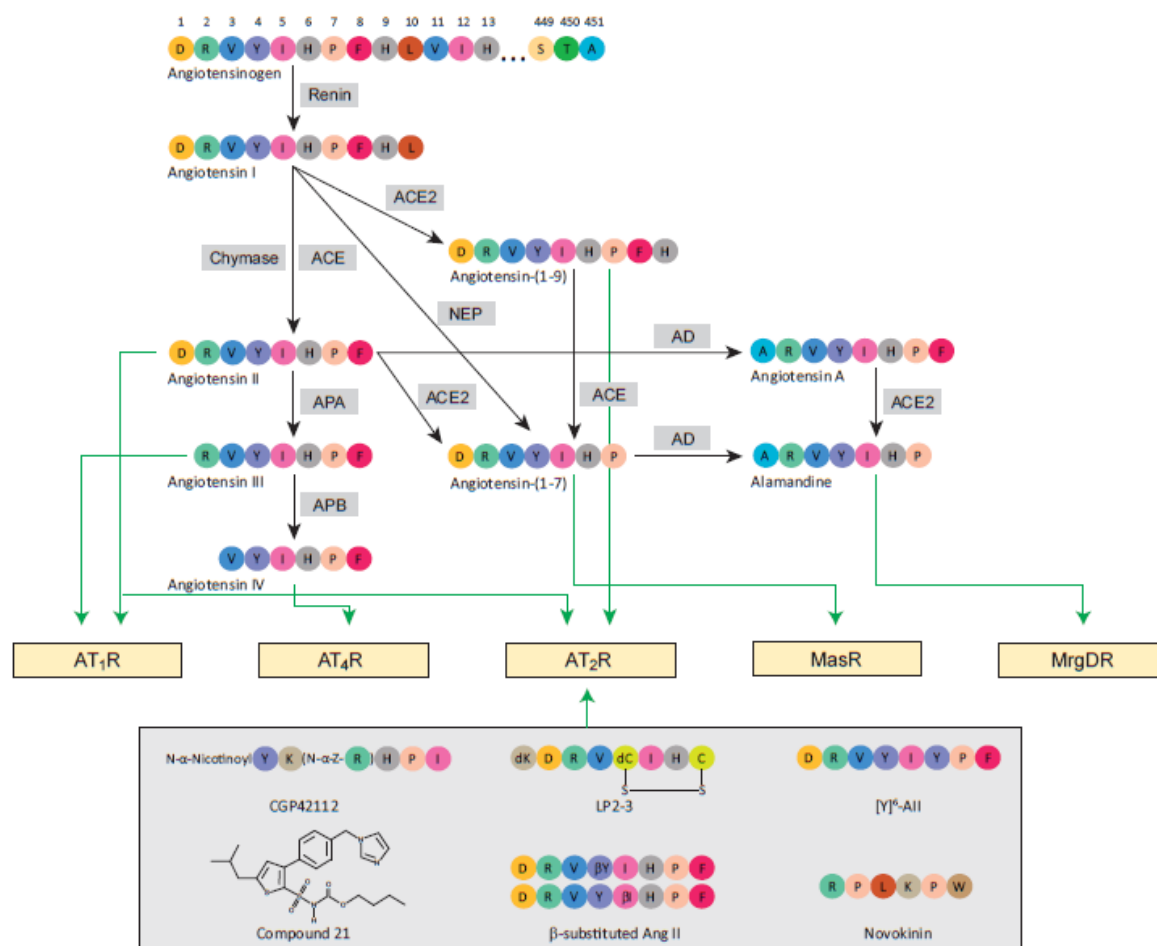


Figure 1. Classical and counter-regulatory renin-angiotensin pathways. In the classical system, renin cleaves angiotensinogen to produce angiotensin I (Ang I). Ang I is cleaved by angiotensin-converting enzyme (ACE) or chymase to form Ang II, which can act through the activation of the type-1 Ang II receptor (AT₁R) and type-2 Ang II receptor (AT₂R). Ang II can be further proteolyzed by *aminopeptidase A* (APA) to form Ang III, which also acts through AT₁R. Moreover, Ang III can be cleaved by *aminopeptidase B* (APB) to generate Ang IV, which binds to AT₄R. Ang I can also be cleaved by angiotensin-converting enzyme 2 (ACE2) and *neutral endopeptidase* (NEP) to produce Ang-(1–9) and Ang-(1–7), respectively. Ang-(1–9) activates AT₂R. Ang-(1–7) binds to the Mas receptor (MasR). Ang-(1–7) can also be formed from cleavage of Ang II by ACE2 and be further metabolized to alamandine. Alternatively, Ang II may be processed by aspartate decarboxylase (AD) to produce Ang A, which can be converted to alamandine by ACE2. Alamandine binds and activates the *Mas-related G-protein coupled receptor* (MrgDR).

Ang IV is generated from Ang III by aminopeptidase B (EC 3.4.11.6) [8]. Ang IV binds to AT₄R, which has been identified as the transmembrane enzyme, insulin-regulated membrane aminopeptidase (IRAP) [9]. In VSMC, Ang IV is involved in vascular inflammation because it activates NF- κ B and up-regulates the monocyte chemokine monocyte chemoattractant protein-1, intercellular adhesion molecule-1, interleukin 6 and tumor necrosis factor alpha [10].

Ang-(1–12) functions as an intracrine/paracrine substrate for local production of Ang II and therefore it is responsible for the locally produced Ang II-dependent actions. Ang II generation from Ang-(1–12) does not require renin and ACE but chymase [11]. Ang-(1–12) binds to AT₁R and causes vasoconstriction, accumulation of inflammatory markers in the sub-endothelial region of blood vessels and activates VSMC proliferation [12].

Angiotensin A (Ang A) is an octapeptide highly similar to Ang II, only differing in the N-terminal in which the Asp1 is decarboxylated into Ala1 [13]. This peptide has the same affinity for the AT₁R and AT₂R as Ang II [13]. This peptide can be hydrolyzed by ACE2 to form the heptapeptide alamandine. Alamandine can also be produced through decarboxylation of Asp1 into Ala1 of Ang-(1–7) [14]. Alamandine acts through the activation of MrgDR receptor [14].

ACE2 and vascular remodelling

The discovery of the homologous angiotensin I converting enzyme (ACE2; EC 3.4.17.23), added a greater complexity to the classical RAS axis [5]. The current evidence suggests that this new axis has counter-regulatory effects to the classical RAS [5]. ACE2 differs from ACE both in substrate specificity and in function. ACE2 is a zinc-dependent monocarboxypeptidase which is 40% similar to ACE. ACE2 produces Ang-(1-9) and Ang-(1-7) from the hydrolysis of Ang I and Ang II, respectively. Moreover, Ang-(1-7) can also be synthesized from Ang-(1-9) through the action of ACE [5]. Ang-(1-7) can be converted to Ang-(1-5) by ACE or by neutral endopeptidase (neprilysin; EC 3.4.24.11) [5]. Ang-(1-7) binds to and activates Mas receptor (MasR), while Ang-(1-9) binds to and activates AT2R [5].

ACE2 is distributed in most tissues but with higher expression in heart, kidney, nasal mucosa, lung, small intestine, brain, and testis; while ACE is mainly expressed in the endothelium throughout the vasculature [15]. Both are plasma membrane bound enzymes that can be released into the circulation by shedding [16]. A dysregulation in this system, by increasing the classical pathway or by decreasing the counter-regulatory axis, can contribute significantly to the pathophysiology of cardiovascular diseases [5].

ACE2 is expressed in VSMC, and vascular injury induces the decrease of ACE2 mRNA and protein, without changes in ACE. Moreover, the neointimal formation induced by vascular injury is further increased in ACE2 knockout mice [17]. In spontaneously hypertensive stroke-prone rats (SHRSP), the transgenic overexpression of human ACE2 in VSMC reduces blood pressure and improves endothelial function [18]. Conversely, in ACE2 knockout aorta, an increased vascular remodelling and fibrosis is observed in response to chronic subcutaneous Ang II injection [19].

In an atherosclerosis mice model, ACE2 deficiency resulted in significantly larger vascular lesions in both aortic atherosclerotic plaques and arterial neointima formation [20]. Additionally, in this model, the inhibition of ACE2 with MLN-4760 also resulted in an increased vascular inflammation and atherosclerotic plaque formation [21]. On the other hand, the overexpression of ACE2 in mice and rabbit atherosclerosis models inhibits the evolution of atherosclerotic plaques [22,23].

All data obtained so far, indicate that the increase of ACE2 in VSMC is associated with a decrease in vascular remodelling and confers protection against several vascular diseases, including hypertension and atherosclerosis. Strategies, such as the administration of Ang receptor blockers (ARB), increases vascular ACE2 [24], suggesting that beneficial vascular effect of these drugs could be mediated by ACE2 induction. Another strategy is the administration of recombinant human soluble ACE2 (rhACE2). In a phase 1 clinical trial, it was shown that administration of rhACE2 in doses of 100-1,200 µg/kg is well tolerated by healthy human subjects. rhACE2 showed a dose-independent terminal elimination half-life in the range of 10 h. Moreover, despite marked changes in angiotensin system peptide concentrations, cardiovascular effects were absent, suggesting the presence of effective compensatory mechanisms in healthy volunteers [25]. This therapeutical approach was also explored as a potential therapy to treat human pulmonary arterial hypertension. In a phase 1 clinical trial with 5 patients, rhACE2 was well tolerated, associated with improved pulmonary haemodynamic and reduced markers of oxidant and inflammatory mediators. Unfortunately, no assessment of pulmonary artery remodelling parameters was performed [26]. Further strategies should be explored to confirm that activation of VSMC ACE2 could be a valid therapeutical strategy to treat vascular diseases.

Ang-(1-9) and vascular remodelling

Administration of Ang-(1-9) with osmotic minipumps shows a dose response reduction on blood pressure associated with a decrease in vascular remodeling in SHR [27]. Reduction of vascular remodeling induced by Ang-(1-9) is also described in other models of hypertension, including the Ang II infusion pump [28] and the DOCA-salt hypertensive model [29]. In these models, Ang-(1-9) infusion also decreases aortic intima-media thickness [28,29]. In a pulmonary arterial hypertension crocotine model, Ang-(1-9) reduces right ventricular weight and systolic pressure. It also diminishes proinflammatory cytokines levels and attenuates fibrosis and endothelial damage [30]. In VSMC, Ang-(1-9) decreases proliferation, migration and contractile protein decrease induced by platelet derived growth factor-BB. These effects are mediated by an Ang-(1-9)/AT2R-dependent reduction

of Akt phosphorylation that activates FoxO1 transcription factor [27]. Taking together, all these data suggest that Ang-(1-9) has a direct action of VSMCs inhibiting its dedifferentiation. This effect could be a novel target to be exploited as a treatment for vascular diseases.

AT2R and vascular remodeling

Ang-(1-9), Ang II, and Ang III are described as the endogenous ligand of AT2R [5]. However, several other AT2R agonist have been described. CGP42112, the first available synthetic AT2R agonist, behaves as a full agonist both *in vitro* and *in vivo* [31], although it has been criticized for the lack of selectivity [32]. Other synthetic AT2R agonist are Compound 21 (C21), a nonpeptide small molecule agonist (Vicore Pharma, Gothenburg, Sweden) [33]; LP2-3, a cyclic Ang II derivative (Lanthio Pharma, Groningen, the Netherlands) [34]; several Ang II based peptides obtained by single beta-amino acid substitution [35]; [Y]6-AII, another Ang II-derived peptide [36], and Novokinin, a small peptide that was designed based on ovokinin, a vasorelaxing peptide present in egg albumin [37].

AT2R activation induces vasodilation in several arteries, including coronary, cerebral, mesenteric, uterine, and renal arteries [38]. However, to unmask the vasodilator action of AT2R, experiments must be done by suppressing the vasoconstrictor action of AT1R with an AT1R blocker before and during AT2R stimulation [39]. On the other hand, in AT2R deficient mice, an increase in the basal blood pressure and an augmented blood pressure reactivity upon Ang II infusion as compared to wild type mice are observed [40]. Moreover, the chronic infusion of Ang II to transgenic mice that overexpressed AT2R in VSMC, completely abolished the AT1-mediated pressor effect [41].

Chronically elevated blood pressure causes vascular remodeling characterized by decreased luminal area and thickened medial layer, associated to VSMC hypertrophy, increased VSMC migration, proliferation, extracellular matrix protein synthesis and secretion; and inhibition of apoptosis [28,42]. Using AT2R-deficient mice, it was demonstrated that AT2R mediates an inhibitory effect on femoral, aorta and coronary arteries remodeling in response to pressure overload [43]. The effects of direct AT2R stimulation on vascular remodeling induced by hypertension was studied using C21 [44]. In hypertense animals, AT2R activation prevented the development of vascular hypertrophy and fibrosis [44]. However, in wild type animals, AT2R-dependent inhibition of vascular remodeling effects can be observed mostly when AT1R is blocked. In pulmonary hypertension, C21 attenuates the progression of lung fibrosis and pulmonary hypertension in monocrotaline [45] and bleomycin [46] models. Both C21 and CGP42112 also inhibit neointimal formation induced by vascular injury [45,47]. Taking together, these data indicates that AT2R activation inhibits vascular remodeling. However, whether Ang-(1-9) can mimic most of these AT2R-dependent vascular effects still remains to be elucidated.

Perspectives

The main action described for the counter regulatory RAS is focused to the regulation of the classical RAS. Because the dysregulation of classical RAS is associated with several vascular diseases, including arterial hypertension, pulmonary hypertension, vascular remodeling, and atherosclerosis, the activation of counter regulatory RAS emerges as a suitable therapeutical alternative to treat these diseases [5]. Although preclinical studies performed *in vitro* and *in vivo* shows promising results, much work should still be performed to achieve practical clinical application of counter regulatory RAS components. One of the major limitations to overcome will be to increase the low half-life of different angiotensin peptides in plasma [48]. Therefore, new pharmaceutical formulations and/or the development of new molecules that activates AT2R will be required. Some advances in this field have been already described. Molecules such as C21 (AT2R agonist) and rhACE2 have already been used in clinical trials (Table 1). However, this is a still open area of work that will require further exploration.

Acknowledgements

The authors received funding from the Agencia Nacional de Investigación y Desarrollo (ANID), Chile: FONDAP 15130011, Fondecyt 1180157 and Fondecyt 1220392.

Conflict of interest

M.C. is a co-inventor on patent applications PCT/CL2012/000016 and CL200803736 related to the use of Ang-(1-9) as a cardioprotective, anti-cardiac remodeling and anti-hypertensive compound.

References

- [1] **Chiong M, Morales P, Torres G, Gutierrez T, Garcia L, Ibacache M, Michea L.** Influence of glucose metabolism on vascular smooth muscle cell proliferation. *Vasa*. 2013; 42: 8-16.
- [2] **Duprez DA.** Role of the renin-angiotensin-aldosterone system in vascular remodeling and inflammation: a clinical review. *J Hypertens*. 2006; 24: 983-991.
- [3] **van Thiel BS, van der Pluijm I, te Riet L, Essers J, Danser AH.** The renin-angiotensin system and its involvement in vascular disease. *Eur J Pharmacol*. 2015; 763: 3-14.
- [4] **Ferrario CM.** Role of angiotensin II in cardiovascular disease therapeutic implications of more than a century of research. *J Renin Angiotensin Aldosterone Syst*. 2006; 7: 3-14.
- [5] **Paz Ocaranza M, Riquelme JA, Garcia L, Jalil JE, Chiong M, Santos RAS, Lavandero S.** Counter-regulatory renin-angiotensin system in cardiovascular disease. *Nat Rev Cardiol*. 2020; 17: 116-129.
- [6] **Assersen KB, Sumners C, Steckelings UM.** The Renin-Angiotensin System in Hypertension, a Constantly Renewing Classic: Focus on the Angiotensin AT2-Receptor. *Can J Cardiol*. 2020; 36: 683-693.
- [7] **Yugandhar VG, Clark MA.** Angiotensin III: a physiological relevant peptide of the renin angiotensin system. *Peptides*. 2013; 46: 26-32.
- [8] **von Bohlen und Halbach O.** Angiotensin IV in the central nervous system. *Cell Tissue Res*. 2003; 311: 1-9.
- [9] **Keller SR, Scott HM, Mastick CC, Aebersold R, Lienhard GE.** Cloning and characterization of a novel insulin-regulated membrane aminopeptidase from Glut4 vesicles. *J Biol Chem*. 1995; 270: 23612-23618.
- [10] **Ruiz-Ortega M, Esteban V, Egido J.** The regulation of the inflammatory response through nuclear factor-kappaB pathway by angiotensin IV extends the role of the renin angiotensin system in cardiovascular diseases. *Trends Cardiovasc Med*. 2007; 17: 19-25.
- [11] **Ferrario CM, Groban L, Wang H, Cheng CP, VonCannon JL, Wright KN, Sun X, Ahmad S.** The Angiotensin-(1-12)/Chymase axis as an alternate component of the tissue renin angiotensin system. *Mol Cell Endocrinol*. 2021; 529: 111119.
- [12] **Hussain M, Awan FR.** Hypertension regulating angiotensin peptides in the pathobiology of cardiovascular disease. *Clin Exp Hypertens*. 2018; 40: 344-352.
- [13] **Jankowski V, Vanholder R, van der Giet M, Tolle M, Karadogan S, Gobom J, Furkert J, Oksche A, Krause E, Tran TN, et al.** Mass-spectrometric identification of a novel angiotensin peptide in human plasma. *Arterioscler Thromb Vasc Biol*. 2007; 27: 297-302.
- [14] **Etelvino GM, Peluso AA, Santos RA.** New components of the renin-angiotensin system: alamandine and the MAS-related G protein-coupled receptor D. *Curr Hypertens Rep*. 2014; 16: 433.
- [15] **Gembardt F, Sterner-Kock A, Imboden H, Spalteholz M, Reibitz F, Schultheiss HP, Siems WE, Walther T.** Organ-specific distribution of ACE2 mRNA and correlating peptidase activity in rodents. *Peptides*. 2005; 26: 1270-1277.
- [16] **Patel VB, Clarke N, Wang Z, Fan D, Parajuli N, Basu R, Putko B, Kassiri Z, Turner AJ, Oudit GY.** Angiotensin II induced proteolytic cleavage of myocardial ACE2 is mediated by TACE/ADAM-17: a positive feedback mechanism in the RAS. *J Mol Cell Cardiol*. 2014; 66: 167-176.

- [17] **Iwai M, Nakaoka H, Senba I, Kanno H, Moritani T, Horiuchi M.** Possible involvement of angiotensin-converting enzyme 2 and Mas activation in inhibitory effects of angiotensin II Type 1 receptor blockade on vascular remodeling. *Hypertension*. 2012; 60: 137-144.
- [18] **Rentzsch B, Todiras M, Ilescu R, Popova E, Campos LA, Oliveira ML, Baltatu OC, Santos RA, Bader M.** Transgenic angiotensin-converting enzyme 2 overexpression in vessels of SHRSP rats reduces blood pressure and improves endothelial function. *Hypertension*. 2008; 52: 967-973.
- [19] **Alghamri MS, Weir NM, Anstadt MP, Elased KM, Gurley SB, Morris M.** Enhanced angiotensin II-induced cardiac and aortic remodeling in ACE2 knockout mice. *J Cardiovasc Pharmacol Ther*. 2013; 18: 138-151.
- [20] **Sahara M, Ikutomi M, Morita T, Minami Y, Nakajima T, Hirata Y, Nagai R, Sata M.** Deletion of angiotensin-converting enzyme 2 promotes the development of atherosclerosis and arterial neointima formation. *Cardiovasc Res*. 2014; 101: 236-246.
- [21] **Thomas MC, Pickering RJ, Tsorotes D, Koitka A, Sheehy K, Bernardi S, Toffoli B, Nguyen-Huu TP, Head GA, Fu Y, et al.** Genetic Ace2 deficiency accentuates vascular inflammation and atherosclerosis in the ApoE knockout mouse. *Circ Res*. 2010; 107: 888-897.
- [22] **Zhang YH, Zhang YH, Dong XF, Hao QQ, Zhou XM, Yu QT, Li SY, Chen X, Tengbeh AF, Dong B, et al.** ACE2 and Ang-(1-7) protect endothelial cell function and prevent early atherosclerosis by inhibiting inflammatory response. *Inflamm Res*. 2015; 64: 253-260.
- [23] **Dong B, Zhang C, Feng JB, Zhao YX, Li SY, Yang YP, Dong QL, Deng BP, Zhu L, Yu QT, et al.** Overexpression of ACE2 enhances plaque stability in a rabbit model of atherosclerosis. *Arterioscler Thromb Vasc Biol*. 2008; 28: 1270-1276.
- [24] **Igase M, Kohara K, Nagai T, Miki T, Ferrario CM.** Increased expression of angiotensin converting enzyme 2 in conjunction with reduction of neointima by angiotensin II type 1 receptor blockade. *Hypertens Res*. 2008; 31: 553-559.
- [25] **Haschke M, Schuster M, Poglitsch M, Loibner H, Salzberg M, Bruggisser M, Penninger J, Krahenbuhl S.** Pharmacokinetics and pharmacodynamics of recombinant human angiotensin-converting enzyme 2 in healthy human subjects. *Clin Pharmacokinet*. 2013; 52: 783-792.
- [26] **Hemnes AR, Rathinasabapathy A, Austin EA, Brittain EL, Carrier EJ, Chen X, Fessel JP, Fike CD, Fong P, Fortune N, et al.** A potential therapeutic role for angiotensin-converting enzyme 2 in human pulmonary arterial hypertension. *Eur Respir J*. 2018; 51.
- [27] **Norambuena-Soto I, Ocaranza MP, Cancino-Arenas N, Sanhueza-Olivares F, Villar-Fincheira P, Leiva-Navarrete S, Mancilla-Medina C, Moya J, Novoa U, Jalil JE, et al.** Angiotensin-(1-9) prevents vascular remodeling by decreasing vascular smooth muscle cell dedifferentiation through a FoxO1-dependent mechanism. *Biochem Pharmacol*. 2020; 180: 114190.
- [28] **Ocaranza MP, Moya J, Barrientos V, Alzamora R, Hevia D, Morales C, Pinto M, Escudero N, Garcia L, Novoa U, et al.** Angiotensin-(1-9) reverses experimental hypertension and cardiovascular damage by inhibition of the angiotensin converting enzyme/Ang II axis. *J Hypertens*. 2014; 32: 771-783.
- [29] **Gonzalez L, Novoa U, Moya J, Gabrielli L, Jalil JE, Garcia L, Chiong M, Lavandero S, Ocaranza MP.** Angiotensin-(1-9) reduces cardiovascular and renal inflammation in experimental renin-independent hypertension. *Biochem Pharmacol*. 2018; 156: 357-370.
- [30] **Cha SA, Park BM, Kim SH.** Angiotensin-(1-9) ameliorates pulmonary arterial hypertension via angiotensin type II receptor. *Korean J Physiol Pharmacol*. 2018; 22: 447-456.

- [31] **Brechler V, Jones PW, Levens NR, de Gasparo M, Bottari SP.** Agonistic and antagonistic properties of angiotensin analogs at the AT2 receptor in PC12W cells. *Regul Pept.* 1993; 44: 207-213.
- [32] **Jones ES, Wang Y, Del Borgo M, Denton KM, Aguilar M-I, Widdop RE.** Chapter 19 - Angiotensin-Based Peptides as AT2R Agonists. In: Unger T, Steckelings UM, dos Santos RAS, editors. *The Protective Arm of the Renin Angiotensin System (RAS).* Boston: Academic Press; 2015. p. 141-147.
- [33] **Wan Y, Wallinder C, Plouffe B, Beaudry H, Mahalingam AK, Wu X, Johansson B, Holm M, Botoros M, Karlen A, et al.** Design, synthesis, and biological evaluation of the first selective nonpeptide AT2 receptor agonist. *J Med Chem.* 2004; 47: 5995-6008.
- [34] **Wagenaar GT, Laghmani el H, Fidder M, Sengers RM, de Visser YP, de Vries L, Rink R, Roks AJ, Folkerts G, Walther FJ.** Agonists of MAS oncogene and angiotensin II type 2 receptors attenuate cardiopulmonary disease in rats with neonatal hyperoxia-induced lung injury. *Am J Physiol Lung Cell Mol Physiol.* 2013; 305: L341-351.
- [35] **Jones ES, Del Borgo MP, Kirsch JF, Clayton D, Bosnyak S, Welungoda I, Hausler N, Unabia S, Perlmutter P, Thomas WG, et al.** A single beta-amino acid substitution to angiotensin II confers AT2 receptor selectivity and vascular function. *Hypertension.* 2011; 57: 570-576.
- [36] **Magnani F, Pappas CG, Crook T, Magafa V, Cordopatis P, Ishiguro S, Ohta N, Selent J, Bosnyak S, Jones ES, et al.** Electronic sculpting of ligand-GPCR subtype selectivity: the case of angiotensin II. *ACS Chem Biol.* 2014; 9: 1420-1425.
- [37] **Yamada Y, Yamauchi D, Usui H, Zhao H, Yokoo M, Ohinata K, Iwai M, Horiuchi M, Yoshikawa M.** Hypotensive activity of novokin, a potent analogue of ovokin(2-7), is mediated by angiotensin AT(2) receptor and prostaglandin IP receptor. *Peptides.* 2008; 29: 412-418.
- [38] **Carey RM.** AT2 Receptors: Potential Therapeutic Targets for Hypertension. *Am J Hypertens.* 2017; 30: 339-347.
- [39] **Widdop RE, Matrougui K, Levy BI, Henrion D.** AT2 receptor-mediated relaxation is preserved after long-term AT1 receptor blockade. *Hypertension.* 2002; 40: 516-520.
- [40] **Ichiki T, Labosky PA, Shiota C, Okuyama S, Imagawa Y, Fogo A, Niimura F, Ichikawa I, Hogan BL, Inagami T.** Effects on blood pressure and exploratory behaviour of mice lacking angiotensin II type-2 receptor. *Nature.* 1995; 377: 748-750.
- [41] **Tsutsumi Y, Matsubara H, Masaki H, Kurihara H, Murasawa S, Takai S, Miyazaki M, Nozawa Y, Ozono R, Nakagawa K, et al.** Angiotensin II type 2 receptor overexpression activates the vascular kinin system and causes vasodilation. *J Clin Invest.* 1999; 104: 925-935.
- [42] **Ocaranza MP, Godoy I, Jalil JE, Varas M, Collantes P, Pinto M, Roman M, Ramirez C, Copaja M, Diaz-Araya G, et al.** Enalapril attenuates downregulation of Angiotensin-converting enzyme 2 in the late phase of ventricular dysfunction in myocardial infarcted rat. *Hypertension.* 2006; 48: 572-578.
- [43] **Akishita M, Iwai M, Wu L, Zhang L, Ouchi Y, Dzau VJ, Horiuchi M.** Inhibitory effect of angiotensin II type 2 receptor on coronary arterial remodeling after aortic banding in mice. *Circulation.* 2000; 102: 1684-1689.
- [44] **Rehman A, Leibowitz A, Yamamoto N, Rautureau Y, Paradis P, Schiffrin EL.** Angiotensin type 2 receptor agonist compound 21 reduces vascular injury and myocardial fibrosis in stroke-prone spontaneously hypertensive rats. *Hypertension.* 2012; 59: 291-299.
- [45] **Bruce E, Shenoy V, Rathinasabapathy A, Espejo A, Horowitz A, Oswald A, Francis J, Nair A, Unger T, Raizada MK, et al.** Selective activation of angiotensin AT2 receptors

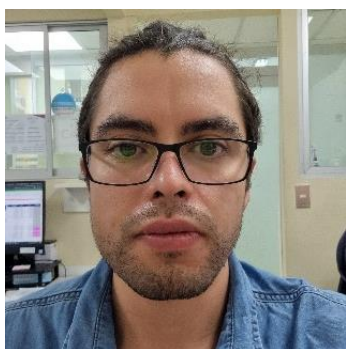
attenuates progression of pulmonary hypertension and inhibits cardiopulmonary fibrosis. *Br J Pharmacol.* 2015; 172: 2219-2231.

- [46] **Rathinasabapathy A, Horowitz A, Horton K, Kumar A, Gladson S, Unger T, Martinez D, Bedse G, West J, Raizada MK, et al.** The Selective Angiotensin II Type 2 Receptor Agonist, Compound 21, Attenuates the Progression of Lung Fibrosis and Pulmonary Hypertension in an Experimental Model of Bleomycin-Induced Lung Injury. *Front Physiol.* 2018; 9: 180.
- [47] **Janiak P, Pillon A, Prost JF, Vilaine JP.** Role of angiotensin subtype 2 receptor in neointima formation after vascular injury. *Hypertension.* 1992; 20: 737-745.
- [48] **Al-Merani SA, Brooks DP, Chapman BJ, Munday KA.** The half-lives of angiotensin II, angiotensin II-amide, angiotensin III, Sar1-Ala8-angiotensin II and renin in the circulatory system of the rat. *J Physiol.* 1978; 278: 471-490.

ABOUT AUTHORS



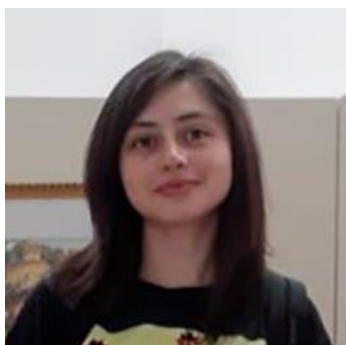
Dr Mario Chiong is a Biochemist with a Ph.D. in Pharmacology from the University of Chile. Since 2015 Mario holds a position as Assistant Professor of the Department of Biochemistry and Molecular Biology of the Faculty of Chemical and Pharmaceutical Sciences. Currently he is also Associated Investigator at the Advanced Center of Chronic Diseases (ACCDiS) and Director of the PAR Explora RM Norte. Mario is the chief of the Metabolism and Vascular Remodeling Laboratory focused to the study of signal transduction and metabolism in cardiovascular diseases, particularly in vascular smooth muscle cells and cardiomyocytes. Actually, Mario Chiong's laboratory is studying the molecular mechanisms involved in vascular remodeling associated with hypertension and heart failure and its relationship with the renin-angiotensin system.



Andrés Ramirez is a Biochemist graduated from the Universidad de Chile and he is currently finishing a master's degree in Clinical Biochemistry at the same institution. Andres Ramirez's work has been focused on the study of the effects of the counter-regulatory renin-angiotensin system on endothelial inflammation.



Fernanda Sanhueza-Olivares is a Biochemist with a master's degree in Biochemistry from the University of Chile. Fernanda is currently finishing a PhD degree in Biomedical Science. During her master work, Fernanda studied of role of mitophagy in the control of vascular smooth muscle cell dedifferentiation. During her Ph.D. thesis she investigated the role of vascular remodeling in the development of heart failure with preserved ejection fraction.



Tamara González Rivera is a biochemistry student at the University of Chile. She completed a research unit at the Metabolism and Vascular Remodeling Laboratory at the same university.



Javiera Martinez Bilbao is a Biochemistry student at the Austral University of Chile. She is currently working on her undergraduate thesis at the Advanced Center for Chronic Diseases at Faculty of Chemical and Pharmaceutical Sciences of the University of Chile focused on the senescence of vascular smooth muscle cells and development of heart failure with preserved ejection fraction. She also serves as a board member of the National Association of Biochemistry Students of Chile (ANEBC) since 2020.



Ignacio Norambuena-Soto is a postdoctoral fellow at the Advanced Center for Chronic Diseases (ACCDiS), University of Chile. He obtained his Ph.D. in Pharmacology at the University of Chile in 2020, studying the role of Angiotensin-(1-9) on the control of vascular smooth muscle cell phenotype. In 2021 he won the Postdoctoral fellowship of the Chilean National Agency for Research and Development. Currently, his research focuses on the molecular mechanisms of insulin resistance and diabetes and how they affect cardiac function.