

ISSN 1669-5402 (Print)

ISSN 1669-5410 (Online)



*Physiological
Mini-
Reviews*

Edited by the Argentine Physiological Society.

Vol. 4, N° 4, February - March 2009.

<http://www.mini.reviews.safisiol.org.ar>

Physiological Mini-Reviews

[ISSN 1669-5402 (Print); ISSN 1669-5410 (Online)]

Edited by the **Argentine Physiological Society**

Journal address: Sociedad Argentina de Fisiología, Universidad Favaloro, Solís 453 (1078), Ciudad de Buenos Aires Argentina.

Tel.-Fax: (54) (0)11 43781151

http: //www.mini.reviews.safisiol.org.ar

Physiological Mini-Reviews is a scientific journal, publishing brief reviews on "hot" topics in Physiology. The scope is quite broad, going from "Molecular Physiology" to "Integrated Physiological Systems". As indicated by our title it is not our intention to publish exhaustive and complete reviews. We ask to the authors concise and updated descriptions of the "state of the art" in a specific topic. Innovative and thought-provoking ideas are welcome.

Editorial Board:

Eduardo Arzt, Buenos Aires, Argentina.
Oscar Candia, New York, United States.
Daniel Cardinali, Buenos Aires, Argentina.
Hugo Carrer, Córdoba, Argentina.
Marcelino Cerejido, México City, México.
Horacio Cingolani, La Plata, Argentina.

Adolfo De Bold, Ottawa, Canada.
Osvaldo Delbono, Salem, United States.
Cecilia Hidalgo, Santiago, Chile.
Carlos Libertun, Buenos Aires, Argentina.
Gerhard Malnic, Sao Paulo, Brasil.
Raúl Marinelli, Rosario, Argentina.
Juan Saavedra, Bethesda, United States.
David Sabatini, New York, United States.

Editor in Chief: Mario Parisi.

Annual suscriptions rates are (see the electronic version for payment instructions):

- a) Printed (Institutions): 120 U\$\$ (Air mail.)
 - b) Printed (Individuals): 100 U\$\$ (Air mail. Including Safis Annual fee.)
 - c) Electronic (Individuals-.PDF): 30 U\$\$ (Including Safis Annual fee.)
 - d) Electronic (Institutions-.PDF): 50 U\$\$
-

Preparation and Submission of manuscripts:

"Physiological Mini-Reviews" will have a maximum of 2500 words, 30 references and 4 figures. Material will be addressed to scientific people in general but not restricted to specialist of the field. For citations in the text and reference list see Cerejido et al. Vol 1, N° 1. Final format will be given at the Editorial Office. Most contributions will be invited ones, but spontaneous presentations are welcome. Send your manuscript in Word format (.doc) to:
mini-reviews@safisiol.org.ar

Advertising:

For details, rates and specifications contact the Managing Editor at the Journal address e-mail:
mini-reviews@safisiol.org.ar

The "Sociedad Argentina de Fisiología" is a registered non-profit organization in Argentina.
(Resol. IGJ 763-04)

GENE TRANSFER-BASED STRATEGIES FOR HEART REGENERATION.

Alberto Crottogini and Rubén Laguens.

**Favaloro University, Buenos Aires, Argentina.
E-mail: crottogini@favaloro.edu.ar**

INTRODUCTION.

Ischemic heart disease is the leading cause of mortality worldwide. Its most frequent and serious complication is acute myocardial infarction, after which the remaining contractile tissue undergoes a process characterized by myocyte hypertrophy and death of the remaining myocardium, and its progressive replacement by fibrosis (Sutton and Sharpe 2000). This process, termed remodeling, eventually leads to left ventricular dilation and heart failure.

The extent of remodeling is largely dependent upon infarct size (Lenderink *et al.* 1995). Small infarcts do not induce significant remodeling. Large ones, contrarily, provoke substantial remodeling and therefore evolve towards contractile failure.

This explains why regenerating the contractile tissue, a process named cardiomyogenesis, has become a major objective in biomedical research.

THE STEM CELL APPROACH TO CARDIOMYOGENESIS.

At present, the most prevalent approach amongst basic and clinical investigators is the implantation of stem cells of diverse origin in the myocardium. Since this is not the subject of our mini-review, the interested reader is referred to excellent recent reviews (Kajstura *et al.* 2008, Strauer *et al.* 2008, Segers and Lee 2008). We would like to make notice that one of the main problems with stem cells is that in addition to differentiating into adult cardiomyocytes and proliferating, they must establish electromechanical connections with the resident cells in order to be functionally integrated to the syncytium, a fact that has not yet been convincingly shown. It has been claimed that cardiomyocytes differentiated from human embryonic stem cells can replace rat myocardium in a xenogenic model of myocardial infarction (Laflamme *et al.* 2005). However, to increase our optimism with the stem cell approach, we need more evidence on issues such as proportion and time of survival of the implanted cells, and, most importantly, we need experiments performed in animal models closer to the human. Recently, a population of resident stem cells that may differentiate into myoblasts and eventually into adult myocytes has been described in the adult heart of humans and other mammals. These cells can be isolated from heart biopsies, grown in culture, and eventually used for myocardial regeneration (see Lyngbaek *et al.* 2007 for review). However, recent reviews insist on the need for a better understanding on the biology and fate of these cells following pathological insults (Kajstura *et al.* 2008).

THE ADULT MAMMALIAN HEART IS NOT A TERMINALLY DIFFERENTIATED ORGAN.

More than thirty years ago, Linzbach postulated that the size increase of the failing heart could not be explained by only hypertrophic growth (Linzbach 1976). Although he could not demonstrate cardiomyocyte mitosis, he definitely contributed extinguishing the dogma of the heart being a fully post-mitotic organ. At present, there is plenty of evidence that the adult cardiomyocyte can re-enter the cell cycle and even progress into mitosis (Anversa and Kajstura 1998, Beltrami *et al.* 2001) (Figure 1A). However, most of the times human adult cardiomyocytes, rather than progressing towards cell division, become polyploid by endomitosis, as observed in our laboratory on hearts of patients who died after acute myocardial infarction (Cabeza Meckert *et al.* 2005) (Figure 1B).

Taken together, these findings indicate that adult mammalian cardiac myocytes preserve the capacity, although to a limited extent, of dividing into daughter cells in response to injury.

The unequivocal evidence against the post-mitotic nature of the cardiac myocyte has encouraged the investigation of strategies aimed to stimulate the adult cardiomyocyte to re-enter the cell cycle and advance into cell division through gene-mediated interventions targeting the cell cycle regulators, or by transferring genes encoding mitotic cytokines.

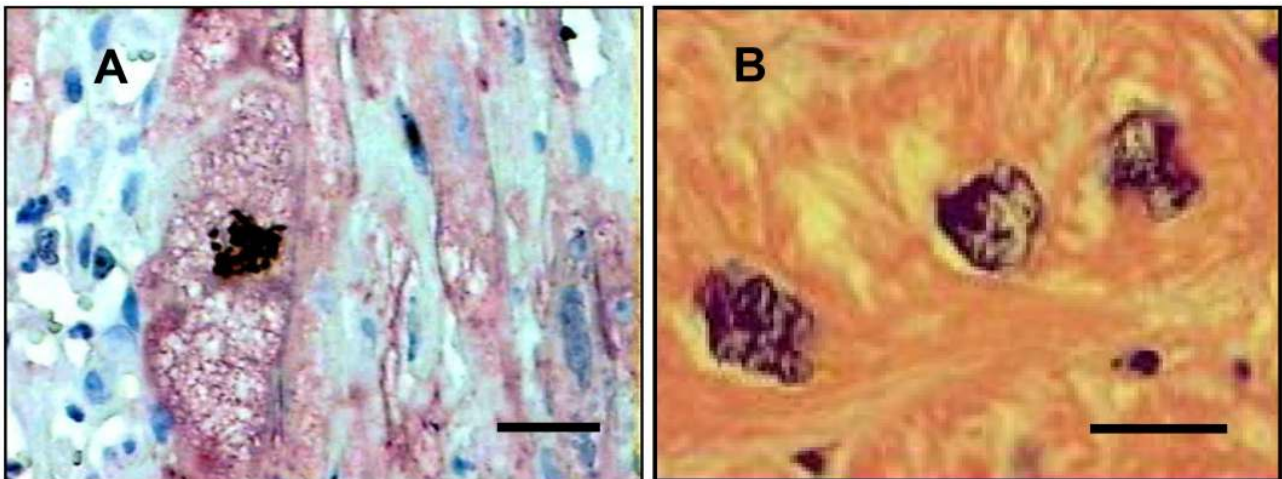


Figure 1. Panel A: human adult cardiomyocyte undergoing mitosis in the border zone of an acute myocardial infarction. Panel B: Polyploid human adult cardiomyocytes (both images belong to Dr. Laguens's archives). Bars: 20 μ m.

GENETIC MANIPULATION OF THE CARDIOMYOCYTE CELL CYCLE.

The mammalian cardiomyocyte cell cycle is a tightly regulated process. Progression between consecutive phases requires overcoming checkpoints that assure completion of all necessary steps. This provides a mechanism to detect defective cells. Transition through the various checkpoints is regulated in part by the activity of a family of protein kinases (the cyclin-dependent kinases or CDKs) and their activating partners (the cyclins). The G2/M checkpoint is the most difficult to overcome, a fact that prevents the adult cardiac myocyte to advance into mitosis. Other genes and their protein products are engaged in initiating or suppressing cell cycle progression. Cell cycle stimulators (cyclins, the cyclin-

dependent kinases [CDKs], protooncogenes) are highly expressed in embryonic and newborn hearts, and are downregulated in the adult heart.

Various studies have used the approach of genetically targeting cell cycle regulators to encourage the cardiomyocyte to re-enter the cell cycle and progress into mitosis and cytokinesis.

A number of studies have targeted transcription factors like E2F-1 (Kirschenbaum *et al.* 1996, von Harsdorf *et al.* 1999), protooncogenes (Jackson *et al.* 1991, Xiao *et al.* 2001) and, more recently, beta-catenin (Hahn *et al.* 2006).

Rather than overexpressing transcription factors, other authors have stimulated cell cycle promoters. In mice overexpressing cyclin D1, Soonpa *et al.* observed increased DNA synthesis, yet not G2/M progression (Soonpaa *et al.* 1997). They later showed that mice overexpressing cyclin D2 (though not those overexpressing cyclin D1 or D3) exhibited newly formed myocardium, infarct size regression and improved function (Pasumarthi *et al.* 2005, Hassink *et al.* 2008). Other cell cycle promoters that have been targeted are bcl-2 (Limana *et al.* 2002), CDK2 (Liao *et al.* 2001), and Cyclin A2 (Chaudhry *et al.* 2004), with diverse degree of success regarding progression into mitosis and cell division.

Finally, some studies have tested interfering with cell cycle inhibitors, either by transfecting E1A, which binds pocket proteins or p300 (Kirshenbaum and Schneider 1995), or by antagonizing proteins like p27^{KIP1} (Poolman *et al.* 1999), p193 and p53 (Nakajima *et al.* 2004), and p38 (Engel *et al.* 2005).

All these studies may help designing future strategies to promote mitosis and division of the adult cardiomyocyte. However, their limitation is that they have been done in laboratory rodents, whose differences in heart size, gestation time and life span with respect to human, make them inappropriate models for direct extrapolation of the results to the clinical setting.

In large mammals, on the other hand, despite the lack of fundamental knowledge regarding many aspects of myocyte division, some authors have described mitosis and even hyperplasia of adult cardiomyocytes by transferring genes coding for mitotic cytokines.

GROWTH FACTOR GENE TRANSFER AND CARDIOMYOGENESIS.

We and others have used the transfer of genes encoding growth factors into the heart to induce the adult cardiomyocyte to re-enter the cell cycle and advance into mitosis.

In pigs with Ameroid-induced experimental chronic myocardial ischemia, the intramyocardial injection of a plasmid encoding VEGF₁₆₅ induced angio-arteriogenesis (Crotogini *et al.* 2003), adult cardiomyocytes mitosis (Laguens *et al.* 2002) and hyperplasia (Laguens *et al.* 2003) (Figure 2).

We later showed that the plasmid provoked infarct size reduction in sheep with left anterior descending artery occlusion (Figure 3) by a combination of effects including an early angiogenic response (7 days after gene transfer), profuse arteriolar proliferation, decreased collagen deposition in the risk area, decreased myofibroblast proliferation, cardiomyocytes mitosis and proliferation of circulating or resident myocyte precursors (myoblasts) (Vera Janavel *et al.* 2006).

The reasons for these effects were not established, but it might be speculated that VEGF upregulated the synthesis of cytokines acting on the myocyte cell cycle (such as TGF- β and FGF), or, since VEGF receptors have been described in rat cardiomyocytes, it directly activated the myocyte mitogen-activated protein kinase cascade.

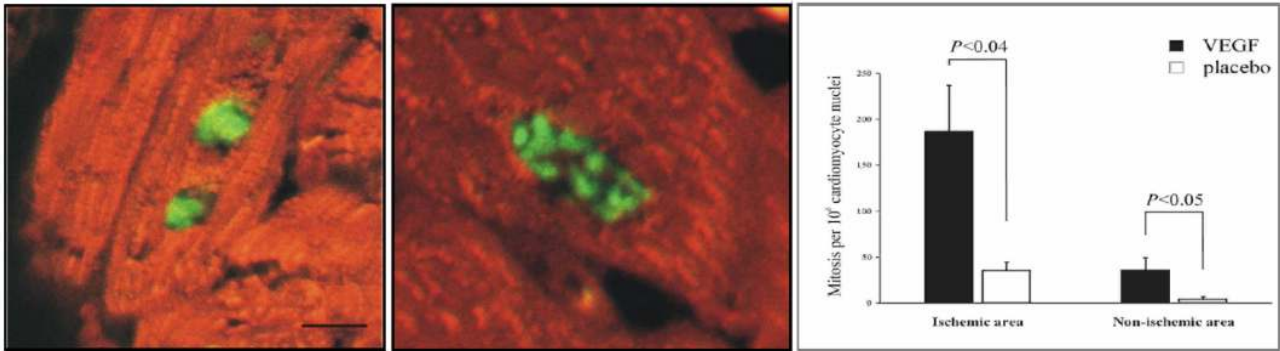


Figure 2. Left and middle: mitotic adult pig cardiomyocytes (confocal microscopy); sarcomeric actin (red) and Ki67 (green) staining. Right: mitotic index of adult cardiomyocytes in left ventricular ischemic and non-ischemic zones. Bars: 10 μ m.

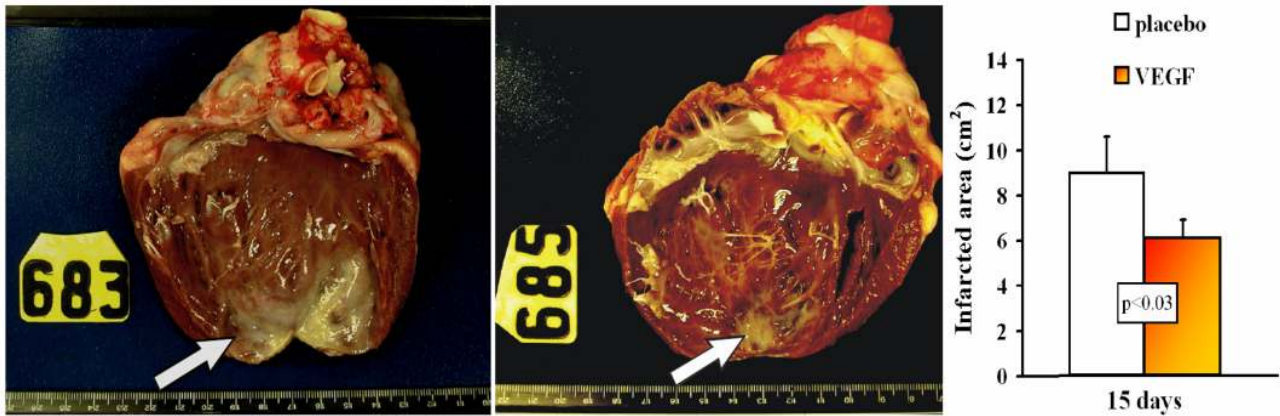


Figure 3. Left and middle panels: arrows show the infarcted zone of the left ventricle in a placebo-transfected and in a pVEGF-transfected sheep, respectively. Right panel: infarct area (in cm²) in placebo- and pVEGF-transfected animals at 15 days after coronary artery ligation.

VEGF₁₆₅ gene transfer-induced cardiomyogenesis was later confirmed in the rat (Liu *et al.* 2007), and very recently in pigs with reperfused myocardial infarction (Guerrero *et al.* 2009).

In pigs with hibernating myocardium, Suzuki *et al.* showed that intracoronary adenoviral FGF-5 induced, at 2 weeks after transfer, a nearly 30% increase in LV mass, significant hypertrophy, a 7-fold increase in cycling myocytes and a 4-fold increase in mitotic myocyte nuclei (Suzuki *et al.* 2005). Regional wall thickening in the hibernating zone, yet not global left ventricular function, increased as a result of hypertrophy.

Improved left ventricular function along with increased regional myocardial blood flow in the same animal model was in fact observed in a later study by that group, (Lynch *et al.* 2007) after 4 weeks of intracoronary Ad-FGF-5 transfer. In this study, the higher cardiomyocyte nuclear density of treated pigs suggested that FGF-5 favorably affected the balance between cell death and cell growth/regeneration, and the smaller myocyte size of transfected animals could be taken as an indication that cytokinesis and/or mobilization of stem cells had occurred.

CONCLUDING REMARKS.

Repairing the injured heart is a central goal of medicine. In acute myocardial infarction, the possibility of limiting its size would reduce the incidence of heart failure; and in dilated cardiomyopathy, replacing fibrosis by contracting tissue would ameliorate the symptoms and reduce the severity of left ventricular failure.

The approach that has gained more adepts in the last 10 years is the implantation of stem cells of diverse origin, with the expectation that they may differentiate into a myocytic phenotype, and even proliferate. The contrast between the positive results reported in isolated cases or open-label studies with small number of patients, and the negative ones from the few randomized, placebo-controlled trials so far available (Abdel-Latif *et al.* 2007) has raised controversy. Moreover, in our opinion this strategy has moved much too fast into the clinical arena, especially considering that most of the preclinical data stems from mice and rats rather than from large mammals, and that fundamental issues, such as the ultimate fate of the implanted cells, are still unknown.

The nowadays unequivocal evidence that the adult human cardiomyocyte is not a terminally differentiated cell, able, though to a very little extent, to progress into mitosis, has encouraged the alternative approach of promoting this process by gene-based manipulation of the cell cycle or by transferring genes coding for diverse growth factors.

Theoretically, this is a more physiological approach to cardiomyogenesis, because it would preserve the electromechanical connection between cells needed for adequate myocardial function.

Unfortunately, our knowledge about the signalling pathways and cascade of biochemical events leading to cardiomyocyte division is still very limited as to expect prompt results. Likely, a bulk of biotechnological research is still needed in terms of vectors and delivery methods. However, given the physiological nature of its underlying rationale, the gene therapy approach to cardiomyogenesis should not be discouraged. A slow, though sustained, progress is to be expected inasmuch basic science will certainly provide us with new, necessary insights on cell cycle regulation and mechanisms of cardiomyocyte division.

Last, but not least, all new strategies should be investigated in large mammals before proposing its testing in clinical trials of heart diseases characterized by loss of contractile tissue.

ACKNOWLEDGEMENTS.

Supported by grants from Agencia Nacional de Promoción Científica y Tecnológica (BID 1728/OC-AR PID 268) and the René G. Favaloro University Foundation.

REFERENCES.

1. **Abdel-Latif A, Bolli R, Tleyjeh IM, et al.** Adult bone marrow-derived cells for cardiac repair: a systematic review and meta-analysis. *Arch Intern Med* 167: 989-997, 2007.
2. **Anversa P, Kajstura J.** Ventricular myocytes are not terminally differentiated in the adult mammalian heart. *Circ Res* 83: 1-14, 1998.
3. **Beltrami AP, Urbanek K, Kajstura J, et al.** Evidence that human cardiac myocytes divide after myocardial infarction. *N Engl J Med* 344: 1750-1757, 2001.

4. **Cabeza Meckert P, García Rivello H, Vigliano C, et al.** Endomitosis and polyploidization of myocardial cells in the periphery of human acute myocardial infarction. *Cardiovasc Res* 2005;67:116-23.
5. **Chaudhry HW, Dashoush NH, Tang H, et al.** Cyclin A2 mediates cardiomyocyte mitosis in the postmitotic myocardium. *J Biol Chem* 2004;279:35858-66.
6. **Crottogini A, Cabeza Meckert P, Vera Janavel G, et al.** Arteriogenesis induced by intramyocardial vascular endothelial growth factor 165 gene transfer in chronically ischemic pigs. *Hum Gene Ther* 2003;14:1307-18.
7. **Engel FB, Schebesta M, Duong MT, et al.** p38 MAP kinase inhibition enables proliferation of adult mammalian cardiomyocytes. *Genes Dev* 2005;19:1175-87.
8. **Guerrero M, Athota K, Moy J et al.** Vascular endothelial growth factor-165 gene therapy promotes cardiomyogenesis in reperfused myocardial infarction. *J Interven Cardiol* 21: 242-251, 2008.
9. **Hahn JY, Cho HJ, Bae JW, et al.** Beta-catenin overexpression reduces myocardial infarct size through differential effects on cardiomyocytes and cardiac fibroblasts. *J Biol Chem* 2006;281:30979-89.
10. **Hassink R, Pasumarthi K, Nakajima H, et al.** Cardiomyocyte cell cycle activation improves cardiac function after myocardial infarction. *Cardiovasc Res* 2008;78:18-25.
11. **Jackson T, Allard MF, Sreenan CM, et al.** Transgenic animals as a tool for studying the effect of the c-myc proto-oncogene on cardiac development. *Mol Cell Biochem* 1991;104:15-19.
12. **Kajstura J, Urbanek K, Rota M, Bearzi C, Hosoda T, Bolli R, Anversa P, Leri A.** Cardiac stem cells and myocardial disease. *J Mol Cell Cardiol* 2008;45:505-13.
13. **Kirshenbaum LA, Abdellatif M, Chakraborty S, et al.** Human E2F-1 reactivates cell cycle progression in ventricular myocytes and represses cardiac gene transcription. *Dev Biol* 1996;179:402-11.
14. **Kirshenbaum LA, Schneider MD.** Adenovirus E1A represses cardiac gene transcription and reactivates DNA synthesis in ventricular myocytes, via alternative pocket protein- and p300-binding domains. *J Biol Chem* 1995;270:7791-4.
15. **Laflamme M, Gold J, Xu C, et al.** Formation of human myocardium in the rat heart from human embryonic stem cells. *Am J Pathol* 2005;167:663-71.
16. **Laguens R, Cabeza Meckert P, Vera Janavel G, et al.** Cardiomyocyte hyperplasia after plasmid-mediated vascular endothelial growth factor gene transfer in pigs with chronic myocardial ischemia. *J Gene Med* 2004;6:222-7.
17. **Laguens R, Cabeza Meckert P, Vera Janavel G, et al.** Entrance in mitosis of adult cardiomyocytes in ischemic pig hearts after plasmid-mediated rhVEGF165 gene transfer. *Gene Ther* 2002;9:1676-81.
18. **Lenderink T, Simoons ML, Van Es GA, et al.** Benefit of thrombolytic therapy is sustained throughout five years and is related to TIMI perfusion grade 3 but not grade 2 flow at discharge. The European Cooperative Study Group. *Circulation* 1995;92:1110-6.
19. **Liao HS, Kang PM, Nagashima H, et al.** Cardiac-specific overexpression of cyclin-dependent kinase 2 increases smaller mononuclear cardiomyocytes. *Circ Res* 2001;88:443-50.
20. **Limana F, Urbanek K, Chimenti S, et al.** bcl-2 overexpression promotes myocyte proliferation. *Proc Natl Acad Sci USA* 2002;99:6257-62.
21. **Linzbach AJ.** Hypertrophy, hyperplasia and structural dilatation of the human heart. *Adv Cardiol* 1976;18:1-14.
22. **Liu X, Chen Y, Zhang F, et al.** Synergistically therapeutic effects of VEGF165 and angiopoietin-1 on ischemic rat myocardium. *Scand Cardiovasc J* 2007;41:95-101.

23. **Lynch P, Lee TC, Fallavollita JA, et al.** Intracoronary administration of AdvFGF-5 (fibroblast growth factor-5) ameliorates left ventricular dysfunction and prevents myocyte loss in swine with developing collaterals and ischemic cardiomyopathy. *Circulation* 2007;116(1 Suppl):I71-6.
24. **Lyngbaek S, Schneider M, Hansen JL, Sheikh SP.** Cardiac regeneration by resident stem and progenitor cells in the adult heart. *Basic Res Cardiol* 2007;102:101-14.
25. **Nakajima H, Nakajima HO, Tsai S, Field L.** Expression of mutant p193 and p53 permits cardiomyocyte cell cycle reentry after myocardial infarction in transgenic mice. *Circ Res* 2004;94:1606-14.
26. **Pasumarthi K, Nakajima H, Nakajima HO, Soonpaa M, et al.** Targeted expression of cyclin D2 results in cardiomyocyte DNA synthesis and infarct regression in transgenic mice. *Circ Res* 2005;96:110-8.
27. **Poolman RA, Li JM, Durand B, et al.** Altered expression of cell cycle proteins and prolonged duration of cardiac myocyte hyperplasia in p27KIP1 knockout mice. *Circ Res* 1999;85:117-27.
28. **Segers VF, Lee RT.** Stem-cell therapy for cardiac disease. *Nature* 2008;451:937-42.
29. **Soonpaa MH, Koh GY, Pajak L, et al.** Cyclin D1 overexpression promotes cardiomyocyte DNA synthesis and multinucleation in transgenic mice. *J Clin Invest* 1997;99:2644-54.
30. **Strauer BE, Brehm M, Schannwell CM.** The therapeutic potential of stem cells in heart disease. *Cell Prolif* 2008;41 Suppl 1:126-45.
31. **Sutton M, Sharpe N.** Left ventricular remodeling after myocardial infarction: pathophysiology and therapy. *Circulation* 2000;101:2981-8.
32. **Suzuki G, Lee TC, Fallavollita JA, et al.** Adenoviral gene transfer of FGF-5 to hibernating myocardium improves function and stimulates myocytes to hypertrophy and reenter the cell cycle. *Circ Res* 2005;96:767-75.
33. **Vera Janavel G, Crottogini A, Cabeza Meckert P, et al.** Plasmid-mediated VEGF gene transfer induces cardiomyogenesis and reduces myocardial infarct size in sheep. *Gene Ther* 2006;13:1133-42.
34. **von Harsdorf R, Hauck L, Mehrhof F, et al.** E2F-1 overexpression in cardiomyocytes induces downregulation of p21CIP1 and p27KIP1 and release of active cyclin-dependent kinases in the presence of insulin-like growth factor I. *Circ Res* 1999;85:128-36.
35. **Xiao G, Mao S, Baumgarten G, et al.** Inducible activation of c-Myc in adult myocardium in vivo provokes cardiac myocyte hypertrophy and reactivation of DNA synthesis. *Circ Res* 2001;89:1122-9.



Argentine
Physiological
Society
